

**Providing "Japanese-style childcare" in Indonesia**  
**Opening of the 2nd directly-managed nursery in Jakarta Selatan, Pakubuwono area**  
**in February 2026**

A new concept nursery combining "Japanese-style childcare" nurtured in Indonesia with "Montessori education"

Human Starchild Co., Ltd. (Headquarters: Yokohama, Kanagawa, Japan, Representative Director: Yusuke Kawashita, hereinafter referred to as "Company"), a subsidiary of Human Academy Co., Ltd. which develops childcare business, announces that PT. HUMAN CITA ANANDA (Headquarters Jakarta Selatan, Indonesia, hereinafter referred to as "HCA"), a subsidiary of Human Holdings Co., Ltd., will open its second childcare facility (hereinafter referred to as "the nursery") in Indonesia in early February 2026 in the Pakubuwono area (Kebayoran Baru), a luxury residential area in Jakarta Selatan.

The nursery will offer a hybrid educational curriculum that incorporates elements of "Montessori education" in addition to the detailed Japanese-style childcare that HCA has been providing locally in Indonesia.

## Key Points

- Following the opening in "Kuningan" in Jakarta Selatan, the 2nd directly-managed nursery will open in the luxury residential area "Pakubuwono" in February 2026
- Introducing a hybrid educational curriculum of "Japanese-style childcare" × "Montessori"
- A safe and spacious environment with a detached house-type nursery building
- Aiming to spread "Japanese-style childcare" in Southeast Asia, including Indonesia

## Background and Purpose of the Opening

In Indonesia, along with economic growth, the number of dual-income households is increasing, while the lack of childcare facilities where children can be safely entrusted has become a social issue. HCA operates a nursery in the Kuningan area of Jakarta Selatan, and by providing the knowledge of "safe, secure, and high-quality childcare" that the Company has cultivated over many years in Japan, we have been offering detailed Japanese-style childcare service locally. The Japanese-style childcare is beginning to be accepted locally, as evidenced by the fulfillment of first nursery's capacity.

Against this background, we will open the second nursery in the Pakubuwono area (Kebayoran Baru), known as a green and quiet luxury residential area in the center of South Jakarta, and provide a more fulfilling childcare environment to expatriate families and local families with a high interest in education living nearby.

In the future, we will work on business expansion in Southeast Asia, starting with dominant expansion in Indonesia.

## Features of the Second Nursery

1. Introduction of Montessori education elements: Based on the curriculum centered on "Japanese-style childcare" that has been evaluated at the currently operating first nursery in Indonesia, we will newly add elements of Montessori education that nurture children's "self-educational ability".

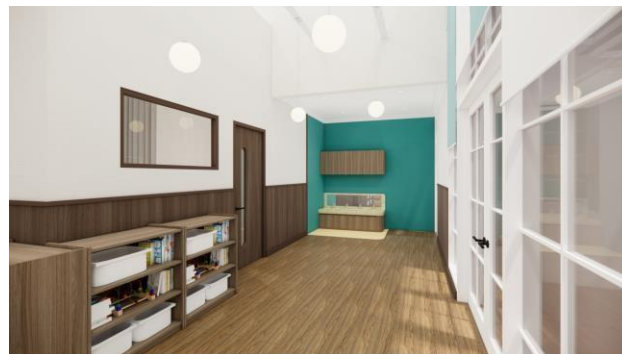
[Materials and environment]: We will provide an environment (the prepared environment) where children can choose activities spontaneously by arranging Montessori materials according to age and developmental stage.

[Fostering independence]: By accumulating the sense of achievement of "I did it myself," we nurture self-esteem and independence.

2. Safe Japanese-style operation and hospitality: As with the first nursery, we apply the safety standards and operational management knowledge of "Starchild," which has many years of childcare experience in Japan. In addition to thorough hygiene management, we emphasize careful interaction with each child, creating an environment where parents can entrust their children with peace of mind.
3. Optimal location environment (Pakubuwono area): The Pakubuwono area in Kebayoran Baru, where the second nursery is located, is particularly safe and green within Jakarta City. The spacious nursery building of the detached house-type ensures a space where children can spend their time there freely.

## Facility Overview

Name of facility	Starchild Daycare & Preschool Pakubuwono
Address	Jl. Martimbang V No.4 Kebayoran Baru, Kota Jakarta Selatan, Daerah Khusus Ibukota Jakarta (Jakarta Selatan, Pakubuwono area)
Scheduled opening date	Early February 2026
Age group	0-5 years old
Capacity	60 student
Operating Hours	Monday to Friday 9:00 to 17:00 (Drop-off time: 8:30 to 9:00 / Pick-up time: 17:00 to 17:30)



## Directly-managed nurseries in Southeast Asia

### ■ Indonesia

#### Starchild Daycare & Learning Center

Address: Jl. Prof. DR. Satrio No.43 7, RT.7/RW.2, Kuningan, Kuningan Tim., Kecamatan Setiabudi, Kota Jakarta Selatan, Daerah Khusus Ibukota Jakarta, Indonesia

Age group: 3 months old to 6 years old

Capacity: 60 students

Operation hours: Monday to Friday 8:00 to 17:30

U R L: <https://humanstarchild.com/company-indonesia/>

For inquiries regarding this matter, please contact Human Starchild Co., Ltd. PIC: Takumi

TEL: 045-276-3244 FAX:045-276-3253 E-mail:info@starchild.jp

## ■ Malaysia

### Human Starchild Care Centre

Address: L1-68B Mitsui Shopping Park Lalaport, No.2, Jalan Hang Tuah, 55100 Kuala Lumpur, Malaysia

Age group: 1 year old to 4 years old

Capacity: 45 students

Operation hours: Monday to Friday 8:30 to 18:00

U R L: <https://humanstarchild.com/company-malaysia/>

## ■ About Human Starchild

Starting with the opening of the licensed nursery "Starchild Eda Nursery" in Aoba Ward, Yokohama City in 2004, under the "Starchild" brand, we have opened licensed nurseries in three cities: Yokohama City, Kawasaki City, and Saitama City, where there is demand for nurseries. In April 2023, we opened licensed nurseries in Minato Ward and Nakano Ward, Tokyo. In addition to operating 42 licensed nurseries, we are entrusted with operating 11 in-house nurseries in the metropolitan area (as of April 1, 2025). Features include facilities with high design quality and meals with carefully selected ingredients, providing a safe and creatively devised childcare environment.

From April 2024, we entered the after-school childcare business with Bunkyo Ward after-school childcare "Starchild After-school Club Sendagi", and in April 2025, opened Chiyoda Ward "Starchild After-school Club Izumibashi". In Yokohama City, we are entrusted with operating after-school clubs at Kanazawa Ward Kamariya Elementary School, Kanagawa Ward Saito Bun Elementary School, and Konan Ward Serigaya Minami Elementary School.

Furthermore, from May 2025, we also started child development support business at "Children Support Plaza Minatos Tsunashima (Kohoku Ward, Yokohama City) and Hakuraku (Kanagawa Ward, Yokohama City)", and from December 1, 2025, at "Children Support Plaza Minatos Miyazakidai (Miyamae Ward, Kawasaki City)".

We are also expanding overseas to countries such as Indonesia and Malaysia, providing childcare services utilizing Japanese-style childcare knowledge and experience.

● Human Starchild Website: <https://www.starchild.jp/>

## ■ About Human Group

Human Group, with education business at its core, has developed a wide range of businesses including human resources, nursing care, childcare, IT, beauty, and sports, celebrating its 40th anniversary in April 2025. Since its founding in 1985, under the management philosophy of "Isei Ijin" (for the world, for the people), we have been working to solve various social issues that change with the times, such as labor shortages, aging society, and nursery shortage, through our education-centered businesses. Utilizing the resources of each business, we will further strive to solve the issue of the declining domestic labor population.

Human Group, which has continued to face people and society, is actively working on the SDGs (Sustainable Development Goals), which have been set as goals to be achieved globally. Through contributions to the SDGs, we will contribute to building a better society.

● Human Holdings Website: <https://www.athuman.com/>



## Human Starchild Co., Ltd. Company Overview

---

- Representative: Representative Director Yusuke Kawashita
- Location: 5th Floor, Dai 6 Yasuda Building, 3-29-1 Tsuruyacho, Kanagawa Ward, Yokohama City, Kanagawa Prefecture
- Established: June 1994
- Capital: 90 million yen
- URL: <https://www.starchild.jp/>

## Human Academy Co., Ltd. Company Overview

---

- Representative: Representative Director Kenji Imahori

- Location: 1st Floor, Nishi-Shinjuku Prime Square, 7-5-25 Nishi-Shinjuku, Shinjuku Ward, Tokyo
- Established: April 2010
- Capital: 10 million yen
- URL: <https://manabu.athuman.com/>

For inquiries regarding this matter, please contact Human Starchild Co., Ltd. PIC: Takumi  
TEL: 045-276-3244 FAX:045-276-3253 E-mail:info@starchild.jp

For inquiries regarding Human Group, please contact Human Group Public Relations: Wakabayashi, Taira  
E-mail:kouhou@athuman.com